

THOROTON

Number 33: Autumn 2003



AUTUMN LECTURES AND EXCURSIONS

Lectures take place at the YMCA, Shakespeare Street at 2.45pm, unless otherwise stated.

Saturday 6 September: Excursion to Owthorpe and Colonel Hutchinson's Garden

Leader: Dr Chris Salisbury. Dr Salisbury is well known to members of Thoroton, and is one of the leading archaeologists in the Trent Valley Region.

Saturday 11 October: 'Safe Sanctuaries - Fortification and Defence in Medieval Anglo-Scottish Border Churches' - Dr Chris Brooke

Dr Brooke is Special Lecturer in the School of History at the University of Nottingham, and is one of the country's foremost church archaeologists.

Tuesday 14 October: The Keith Train Memorial Lecture - 7.30pm, Friends' Meeting House, Clarendon Street

'Nottingham's Medieval Alabaster' - Mr Francis Cheetham

Mr Cheetham lives in Norwich and has written guides for the Victoria & Albert Museum. This lecture is in advance of the Castle Museum's major exhibition of 2004 on Nottingham Alabaster.

Saturday 8 November: The Nottinghamshire History Lecture

'Continuity and change in the agricultural labour force in Nottinghamshire: the Strelley estate from the 1850s to the First World War' - Dr Nicola Verdon. A native of Nottinghamshire, Dr Verdon holds a research fellowship at the University of Reading and has recently published a highly acclaimed book, *Rural women workers in nineteenth-century England: gender, work and wages*.



Renishaw Hall from its gardens – see excursion report, page 3

Saturday 13 December: 'Your Body Belongs to Me: The Role of the Coroner' - Dr Nigel Chapman.

Dr Chapman, who is the City Coroner, will talk about the role of the Coroner in Nottingham, giving a local perspective to this historic and significant office.

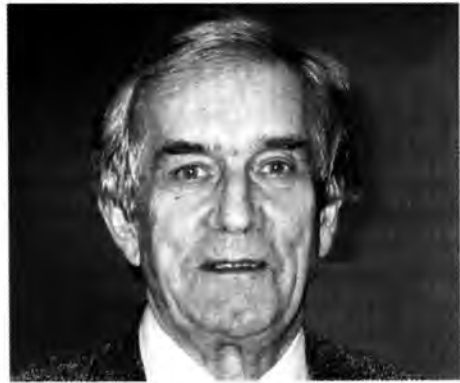
~ The Thoroton Society of Nottinghamshire ~
~ The County's Principal Historical Society ~
Visit the Thoroton Website at: www.thorotonsociety.org.uk

Honorary Degree for Council Member

Ken Brand, a member of the Thoroton Society's Council and vice chair of the Nottingham Civic Society, was awarded the honorary degree of DLitt by the University of Nottingham on 8 July. The award was made to commemorate his thirty years of work detailing, recording, and (wherever possible) interpreting the historic environment of Nottingham, and follows the City Council's designation of Ken as Citizen of Honour in 1997.

Ken, pictured right, regularly updates Thoroton Society Council on planning matters in Nottingham, and provides information and guidance when representations, and possibly objections, are needed in relation to buildings of importance.

He has also, of course, written extensively on some of Nottingham's major architects, including Watson Fothergill and Thomas Chambers Hine. Public orator for the occasion was Professor John Beckett, and an invited guest was Julian Marsh, who designed the D H Lawrence Pavilion on University Park campus, and is one of Ken's 'favourite' local architects! The award was the first to a local historian since Keith Train was made an honorary MA by the University in 1972.



'Nottinghamshire Past'



A new book on the history of Nottinghamshire is about to be published, and details are included with this newsletter. The book is a commemorative volume (*festschrift*) in honour of Adrian Henstock (pictured), to mark his retirement from Nottinghamshire Archives in February this year, and to celebrate his many years of service both to the County Council and to the Thoroton Society. Edited by Thoroton Chairman Professor John Beckett, it includes essays on aspects of the county's history since the 13th-century.

A pre-publication copy of the book was presented to Adrian at a surprise party held at Nottinghamshire Archives on 3 July 2003. Among those present were Mark Dorrington (see below), the new principal archivist to Nottinghamshire County Council, David Lathrope (who, as Assistant Director for Community Services, has

provided financial backing for the book), and several of the authors. Adrian admitted to being caught unawares: in his own words 'I am overwhelmed and incredibly flattered that anyone should do such a thing in my honour'. The book will be formally published in September, jointly by Merton Priory Press and Nottinghamshire County Council, and a special offer is available up to 31 October: see enclosed flyer.

MARK DORRINGTON: NOTTINGHAMSHIRE COUNTY COUNCIL'S NEW PRINCIPAL ARCHIVIST

The Thoroton Society welcomes Mark Dorrington, who has recently taken up the position of Principal Archivist at Nottinghamshire Archives Office. Mark was born in Kent but spent part of his childhood in Scotland. He has an MA in Medieval History from the University of St Andrews, and a Diploma in Archives Administration from the University College of Wales, Aberystwyth. From 1984-1987 Mark was Assistant Archivist to the West Yorkshire Archive Service, based in Wakefield. He then spent five years as Archivist at York Minster for the Dean and Chapter of York. From 1993 he worked at the Staffordshire Archive Service, being Archivist in Charge at Lichfield Record Office for four years, before taking on the position of Principal Archivist up until earlier this year. He has also taught in adult education at the Universities of Leeds and Keele.

OLD NOTTINGHAM: AN EXHIBITION OF PHOTOGRAPHS

Saturday 18 October, 11am-5pm: Church Hall, St Mary's, Wollaton Hall Drive

Over 1200 photographs, including drawings of Thomas William Hammond, from the Beilby collection, dating from 1858. Bernard Beilby will give an illustrated talk at 2.45pm.

Ticket price: £1 in advance, £1.25 at the door; children 75p. Refreshments available. Tickets from St George's in the Meadows Parish Church, or from Bernard Beilby, tel. 0115 9786891.

REPORTS OF EXCURSIONS

Saturday 14 June: Renishaw Hall. Leader: Peter Reddish



What on earth has an American Red Oak to do with Edwinstowe? The church leaflet will mention the grave of E Cobham Brewer - he of the Dictionary of Phrase and Fable fame - as being 'near' the Tower. A more precise indicator is the Red Oak, a large tree with low-growing boughs sheltering a small sturdy stone cross on a stepped pedestal. Inside St. Michael's church is a stitched map of the parish, a work of art in the tradition of the embroidered Road map in Nottingham Costume Museum. Renishaw - I'm a Sitwell fan and Renishaw is about the Sitwells. They left their mark on the architecture and the collections. But Edith and Osbert were not only patrons of the Arts, they were also professional artists themselves. Edith's ear for spoken sound values is as elegant as work by Adam or Mozart. The abstract poems of *Façade* by Edith were set to music by a 19-year old student, the young Sir William Walton, perfectly matching her moods and rhythms. The exhibition of Sitwell memorabilia included editions of *Façade*. The works of their friend, artist John Piper, are also on display. My thanks, on behalf of others, for our welcome at St. Michael's and Peter and Anne Reddish's planning of such a pleasant day. **Left: Renishaw Hall south aspect** **Keith Goodman**

The excursion proved very popular and many people were disappointed not to be able to attend the excursion. If there is sufficient interest it is hoped to arrange a second visit. This would not be an official excursion, and members would be expected to make their own way there; the Society would merely facilitate the formation of a group (minimum 20). If you are interested contact Keith Goodman, 59 Briar Gate, Long Eaton, Nottingham, NG10 4BQ.

Thursday 3 July: Bolsover and Sutton Scarsdale Leaders: Philip Jones and Trevor Foulds

After a wet and slightly late start, the picturesque route was taken to Bolsover via Cuckney and Nether Langworth. Philip Jones explained that the group was booked in as **mature** students on an educational visit! Trevor Foulds gave an explanation of the history of the castle, saying that much of what appears in the guide book may be incorrect – for example, there is no evidence that horses lived in the stables of the riding house. Robert Smithson is credited with designing the present castle which the Cavendish family inhabited; the earlier building was occupied by the Earl of Shrewsbury. Before leaving there was time to look around the town of Bolsover, but there were no sightings of the 'beast'! **Right: the Keep or Little Castle, Bolsover.**



Our second stop of the day took us to Sutton Scarsdale Hall which was visible across the valley from the castle. The hall, which is now a ruin, was built in the early eighteenth century around the nucleus of an earlier hall. In 1824 it was bought by Richard Arkwright, the son of the inventor and industrialist, and it remained in the family until 1920. There was much interest and discussion about the layout, particularly regarding the main entrance and the much more photographed East Side. Tea and biscuits were taken in the adjoining St Mary's church. **Peter Reddish**



Left: Excursion leaders Philip Jones and Trevor Foulds

REPORTS OF EXCURSIONS

Thursday 10 July: Hemlockstone and Bramcote Walled Garden, including the Ice House

Leaders: John Beckett, Barbara Brooke and Alan Clayton



Around fifty Thoroton Society members gathered for an evening visit to the Bramcote-Stapleford area. Barbara Brooke talked about the Bramcote walled garden and ice house, and we then crossed the road (and the parish boundary) into Stapleford, where Alan Clayton told us a little about the Hemlockstone, the sandstone tower just at the side of Coventry Lane (pictured left).

We then moved on to the church hall at Bramcote, where members of the Bramcote Local History Society served tea and biscuits, and showed us around the church: built 1861, Gothic revival, replacing an earlier building of which only the tower remains) and their collection of historic photographs.

This was a joint event with the Stapleford and Bramcote local history societies, and we are grateful to both, and particularly to Barbara Brooke and Val Bird, for their help with setting it up.

John Beckett

Left: The Hemlockstone, with assembled Thoroton Society members

QUESTIONNAIRE RESULTS - Replies to the recent questionnaire showed that a number of members would like an opportunity to meet socially and chat, other than at lectures or excursions. A Garden Party is planned for the afternoon of Sunday 20th June 2004 at Bromley House Library – further details later. On the day, volunteers will be needed to assist with moving tables and chairs, controlling entrance at the door, and helping generally. Would members willing to help in any capacity please contact Peter Reddish on (0115) 926 9334 or email ann@carnielgardens.fsnet.co.uk.

HISTORIC MAPS

Nottingham County Council have followed up their popular reprint of Sanderson's 1835 map with two more attractive reproductions, this time in full colour, beautifully printed and available from public libraries, information offices etc, at remarkably reasonable prices.

John Chapman's map of Nottinghamshire, published in 1776 and printed at a scale of one statute mile to one inch, is produced as ten A3 sheets in a convenient folder. It benefits immensely from a characteristically informative description by Adrian Henstock, who was heavily involved with the planning and production of this and also the other map - Charles Smith's County of Nottingham published in 1804 and now reproduced at approximately three miles to one inch on card 23 x 20 inches. The Chapman set sells at £9.99, the Smith map at £5.99. The County Council, the Printers (Technical Print Services) and all concerned are to be congratulated on this venture.

Neville Hoskins

Tenth Congress of the Council for Independent Archaeology Sheffield University, 30 & 31 August 2003

This congress is not to be missed by any enthusiastic archaeologist. This year's programme will begin with 'Public Archaeology and Local Societies', with contributions from English Heritage, the CBA, IFA, and Time Team fresh from the Big Dig. There will be presentations from the 'British Archaeological Pitt Rivers Award' finalists, who will hopefully inspire other groups to enter this very prestigious competition.

There is plenty of advice available for getting grants for specific projects. The Millennium Dome was an example where money was obtained without thinking

it all through; the congress will be looking at some successful grants and how they were dealt with. A few thousand pounds can be as difficult as billions if your group is responsible for its disposition and getting value for money.

All are welcome to attend what has traditionally been a fun weekend, and if you want to join in the spirit of the event you could mount an exhibition or display of your work. Booking forms and fees payable are available from Mike Rumbold, The Secretary, The Horseshoes, Main Street, Upper Stowe, Northampton, NN7 4SH, telephone 01327 340855.

Don't forget this year's Annual Luncheon on Saturday 1 November at the Saracen's Head, Southwell – see information enclosed with this Newsletter.

Please send contributions for *Newsletter* No. 34 by 7 November 2003 to Janice Avery, Department of History, University of Nottingham, Nottingham NG7 2RD (telephone 0115 951 5929, fax 0115 951 5948, or e-mail janice.avery@nottingham.ac.uk). The views expressed in the *Newsletter* are not necessarily those of the Editor, the Society or its Council.